



**BOTANIC  
GARDENS  
OF SYDNEY**



AUSTRALIAN BOTANIC GARDEN MOUNT ANNAN  
DHARAWAL COUNTRY

**WEDDINGS**



At Australian Botanic Garden Mount Annan, nature's beauty and unforgettable moments come together in one spectacular venue.

Every season and every corner of Australian Botanic Garden Mount Annan (Garden) offers something special, catering to every couple's vision and style. From the vibrant hues of native blooms in spring to the tranquil woodland backdrops, or the breathtaking sunsets over manicured lakeside lawns — each setting is uniquely picturesque.

When you choose this Garden for your wedding, you're not just immersing yourself in unparalleled botanic beauty, you're also supporting its future legacy, contributing to vital work in science, sustainability and horticulture.

With an array of enchanting ceremony locations, breathtaking photo opportunities and charming reception venues, we invite you to experience why this Garden is the premier wedding destination in the Macarthur region.

We look forward to helping you create memories that last a lifetime.





A woman with long, wavy blonde hair is captured in a graceful pose, wearing a long, flowing white wedding dress with long sleeves. She stands in a lush, green garden with sunlight filtering through the trees, creating a dappled light effect on the grass. The overall mood is serene and romantic.

CELEBRATE  
IN NATURE



A woman in a white wedding dress is twirling on a green lawn. She is wearing a long-sleeved, high-necked dress with a cutout at the waist and a full skirt. The background features a modern building with a curved roof and large columns. The scene is brightly lit, suggesting a sunny day.

## WEDDING VENUES





CONNECTIONS GARDEN	04
HERBARIUM FORECOURT	06
SUNKEN GARDEN	08
LAKESIDE LAWN	08
LAKESIDE PAVILION	09
MARQUEE LAWN	12
THE BOWDEN CENTRE	13
LAKE NADUNGAMBA	14
THE UNDERCROFT	15
THE ISLAND AT WATTLE GARDEN	20
THE ARBOUR AT WATTLE GARDEN	20
SUNDIAL HILL	21
BUFFALO LAWN	21



A romantic scene in a lush garden. A woman in a white, sleeveless, floor-length gown sits on a white metal chair at a small round table. A man in a black tuxedo with a white shirt and black bow tie stands beside her, looking down at her. The background is filled with dense greenery, including large ferns and palm trees. A small waterfall flows into a pond to the left. The scene is set on a dark grey paved area.

# CONNECTIONS GARDEN





## An intimate rainforest garden.

Connections Garden is our most sought-after venue and it's easy to see why. Surrounded by a lush rainforest backdrop, this stunning garden creates the perfect setting for a memorable ceremony or cocktail reception.

Explore its serene waterfall, meandering pathways and overhanging boardwalk for spectacular photography of your special day. This exclusive space also has limited public access when booked, ensuring your event remains intimate and special.

Ideal for any season, the Connections Garden is especially breathtaking during the warm summer evenings, making it an exceptional choice for your reception.

.....  
Capacity: 80 people  
.....

Event Types: Ceremony,  
Outdoor Reception, Photography  
.....

Facilities: Power Access, After-Hours Use  
.....





# HERBARIUM FORE COURT



## Nature and architecture at its most showstopping.

Experience the ideal blend of modern design and award-winning architecture at the Forecourt of the National Herbarium of New South Wales, nestled within the peaceful surroundings of the Garden. A masterpiece in itself, the Herbarium also houses over one million essential historical and scientific specimens.

The Forecourt offers breathtaking views of scenic bushland, striking architecture and impeccably manicured lawns — an ideal setting for any event. Host your special occasion against the backdrop of the spectacular seed vaults, safe in the knowledge that your event will go ahead, rain or shine. This versatile, contemporary space is designed to accommodate both small and large gatherings, day or night.



.....  
Capacity: 600 people  
.....

Event Types: Ceremony, Outdoor  
Reception, Wet-Weather Option  
.....

Facilities: Power Access, After-Hours Use  
.....





Immersive and intimate.

With a seamless blend of man-made elements and the untouched beauty of the natural landscape, the Sunken Garden stands out for its unique charm. Surrounded by woodland varieties, its curved and textural wall frames an intimate manicured lawn, creating a beautiful setting for smaller ceremonies. With soft, natural light, this garden feels both secluded and connected to the surrounding environment.

.....  
Capacity: 20 people  
.....

.....  
Event Types: Ceremony  
.....

.....  
Facilities: Power Access, After-Hours Use  
.....



A tranquil and adaptable space.

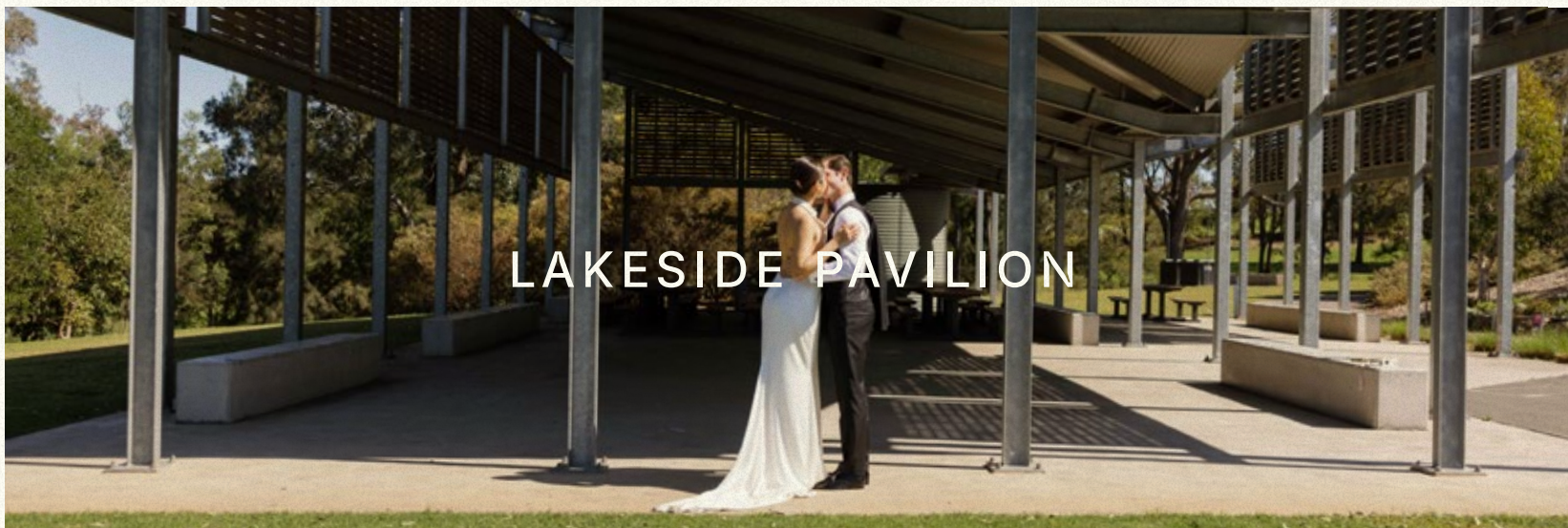
Surrounded by rolling hills, majestic gum trees and a peaceful waterside, this stunning lawn provides the perfect setting to exchange your vows. Ideal for larger weddings, this lakeside venue provides plenty of space, with ample seating for your guests to comfortably enjoy the ceremony. The natural shade from the surrounding trees ensures your guests stay cool in the summer, creating a relaxed and inviting atmosphere.

.....  
Capacity: 400 people  
.....

.....  
Event Types: Ceremony  
.....

.....  
Facilities: Power Access, After-Hours Use  
.....





## LAKESIDE PAVILION

A personalised wedding to remember.

Enjoy the freedom to make your event truly your own at Lakeside Pavilion, whilst enjoying scenic views of the surrounding hills, lake and lush greenery. Featuring picnic table seating and ample shelter for up to 200 guests, the Pavilion offers a casual setting to create lasting memories. With access to the surrounding lawn area, there's even more space to celebrate with food trucks and live entertainment possible.

.....  
**Capacity:** 200 people  
.....

**Event Types:** Ceremony, Outdoor Reception, Wet-Weather Option  
.....

**Facilities:** Power Access, After-Hours Use  
.....









AUSTRALIAN BOTANIC GARDEN MOUNT ANNAN

Where naturally beautiful  
memories are made.

DHARAWAL COUNTRY











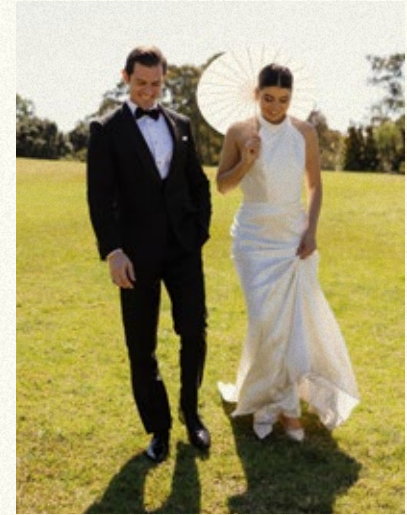


## MARQUEE LAWN

### Expansive yet private for marquee magic.

For a stylish, unforgettable lawn wedding with a stunning lake view, this private, expansive space provides an incredible backdrop for your ceremony and outdoor wedding reception, making it the ideal location for a marquee build. After exchanging your vows, you and your bridal party can escape into the surrounding gardens for a photo session, while your guests enjoy drinks and some fun lawn games.

The Marquee Lawn can comfortably accommodate up to 600 guests, creating an impressive atmosphere for your celebration. For a unique twist, food trucks are also welcome, offering a fun and less traditional catering option. Whether you're envisioning a classic celebration or something a bit more laid-back, the Marquee Lawn provides the flexibility to create the wedding of your dreams.



.....  
Capacity: 600 people  
.....

Event Types: Ceremony,  
Outdoor Reception  
.....

Facilities: Power Access, After-Hours Use  
.....



# THE BOWDEN CENTRE

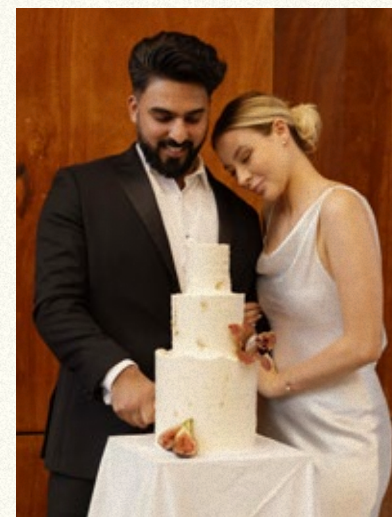


An architecturally-designed venue surrounded by beauty.

The Bowden Centre offers a stunning venue set amidst the serene and unique native Australian bushland. The venue was crafted with ecological sustainability in mind, showcasing an inspiring architectural design that blends timber features inside and out.

The Bowden Centre includes a spacious, air-conditioned function room, a covered alfresco area and a long veranda that opens to the expansive green space. Its well-equipped kitchen will meet your catering needs, along with easy access for loading and unloading. The large lawn areas just outside the venue offer endless possibilities for outdoor activities and beautiful photo opportunities.

With ample space both indoor and outdoors, The Bowden Centre offers a memorable setting in any weather.



.....  
Capacity: 120 people  
.....

Event Types: Ceremony, Reception,  
Wet-Weather Option  
.....

Facilities: Power Access, After-Hours Use  
.....





## Connect to nature with a magical lakeside wedding.

This picturesque setting offers both peacefulness and elegance, creating an unforgettable backdrop for your special day. The calm waters of the lake, reflecting the clear blue sky, are bordered by tall grasses and trees adding a sense of serenity and depth to the scene.

The gently sloping grassy lawn offers ample space for guests to gather while taking in the stunning view. Framed by lush trees in the distance, the lake provides a beautiful natural scene for your ceremony. As the sun sets, it casts a warm, golden glow over the area, enhancing the peaceful, intimate atmosphere. Lake Nadungamba is the ideal location for a wedding ceremony that is both connected to nature and filled with unforgettable moments.

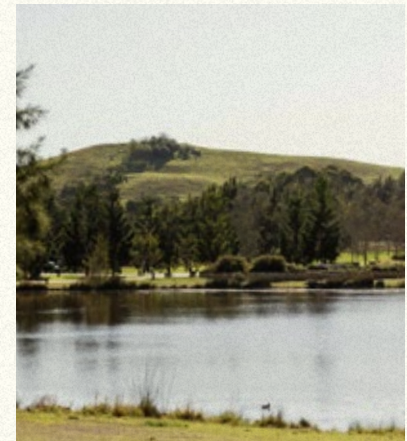
---

Capacity: 100 people

---

Event Type: Ceremony

---







# THE UNDERCROFT

## Marry in award-winning architecture.

Where modern design and award-winning architecture come together, The Undercroft at the Australian PlantBank is a stunning venue. Sleek, stylish, and thoughtfully designed, combining spacious undercover areas with beautiful outdoor spaces, this is an ideal choice for wedding ceremonies and receptions.

Built for plant research and conservation, this modern, award-winning facility now also offers a unique and versatile space that's both practical and visually striking. Its contemporary architecture provides a sophisticated backdrop, while the covered area ensures your celebration is protected from the elements, no matter what the weather brings.

The Undercroft is more than just a venue — it's a space that can be tailored to your vision, whether you're hosting a grand ceremony or an intimate reception. It allows you to create the wedding of your dreams in a truly unique setting.



.....  
Capacity: 300 people  
.....

Event Types: Ceremony,  
Outdoor Reception, Wet-Weather Option  
.....

Facilities: After-Hours Use  
.....







Discover the magic of hosting your special day in the heart of Australian Botanic Garden Mount Annan, a breath-taking venue surrounded by natural beauty and steeped in science and conservation.





AUSTRALIAN BOTANIC GARDEN MOUNT ANNAN

Celebrate your special day  
surrounded by natural beauty.  
Set against the stunning backdrop  
of the Garden, it is the perfect  
spot for wedding ceremonies,  
receptions and photography.

DHARAWAL COUNTRY



## The Garden at a Glance

Find the perfect place for your special day.

Venue	Capacity	Closest Parking	Ceremony	Reception	After-Hours Use	Power Access	Wet-Weather Option
Connections Garden	80	160+ P3	●	●	●	●	
Herbarium Forecourt	600	160+ P3	●	●	●	●	●
Sunken Garden	20	160+ P3	●		●	●	
Lakeside Lawn	400	160+ P3	●		●	●	
Lakeside Pavilion	200	160+ P3	●	●	●	●	●
Marquee Lawn	600	160+ P3	●	●	●	●	
The Bowden Centre	120	160+ P3	●	●	●	●	●
Lake Nadungamba	100	40+ P1	●				
The Undercroft	300	30+ P2	●	●	●		●
The Island at Wattle Garden	120	40+ P7	●	●			
The Arbour at Wattle Garden	40	40+ P7	●				
Sundial Hill	20	20+ P5	●				
Buffalo Lawn	40	60+ P8	●				



# AUSTRALIAN BOTANIC GARDEN MOUNT ANNAN

The Garden at a Glance  
Find the perfect place for your special day.

Venue	Capacity	Closest Parking	Ceremony	Reception	After-Hours	Power Access	Wet-Weather Option
Buffalo Lawn at Banksia	40	60 + P8	●				
Sundial Hill	20	20 + P5	●				
The Arbor at Wattle Garden	40	40 + P7	●				
The Island at Wattle Garden	120	40 + P7	●	●			
The Undercroft	300	30 + P2	●	●	●		
Lake Nardungamba	100	40 + P1	●				
The Bowden Centre	120	160 + P3	●	●	●	●	●
Lakeside Pavilion	200	160 + P3	●	●	●	●	●
Marquee Lawn	600	160 + P3	●	●	●	●	
Lakeside Lawn	400	160 + P3	●	●	●	●	
Sunken Garden	20	160 + P3	●	●	●	●	
Herbarium Forecourt	600	160 + P3	●	●	●	●	●
Connections Garden	80	160 + P3	●	●	●	●	









## THE ISLAND AT WATTLE GARDEN

A breathtaking venue bursting with springtime joy.

As magical as it sounds, this venue is a stunning outdoor paradise for your wedding celebration. From August to September, the garden bursts into life with vibrant yellow wattle blooms, adding joy and radiance to your special day. The Island at Wattle Garden, with its lush greenery, enchanting tree canopies and a tranquil water backdrop, is an idyllic and intimate venue with ample space to host your ceremony and reception.

.....  
Capacity: 120 people  
.....

.....  
Event Types: Ceremony, Outdoor Reception  
.....



## THE ARBOUR AT WATTLE GARDEN

Where your love story unfolds in the most magical way.

The Arbour at Wattle Garden offers a peaceful and intimate location for your wedding ceremony. Surrounded by the vibrant beauty of native plants, this unique venue is beautiful all year round, offering a romantic atmosphere in every season. Whether it's the warmth of spring or the crispness of autumn, this enchanting space provides a timeless setting for your ceremony.

.....  
Capacity: 40 people  
.....

.....  
Event Type: Ceremony  
.....





A breathtaking viewpoint for intimate ceremonies and stunning sunsets.

Perched on one of the highest viewpoints in the Garden, Sundial Hill offers unparalleled panoramic views stretching across the rolling hills and lush garden areas. As the sun begins to set, this venue transforms into a magical space for unforgettable sunset photography, with warm golden light casting a soft glow over the landscape. With a capacity for up to 20 guests, it is perfect for an intimate ceremony.

.....  
Capacity: 20 people  
.....

.....  
Event Type: Ceremony, Photography  
.....



Where a lush backdrop meets a manicured lawn.

Buffalo Lawn offers an intimate, memorable setting to exchange your vows. Surrounded by lush greenery, this venue provides an enchanting space that can be styled to suit any theme — from a boho bridal retreat to a chic garden soirée, or a traditional celebration to a rustic affair. Large eucalyptus trees form a gorgeous canopy of shade, creating a serene, peaceful atmosphere for your ceremony.

.....  
Capacity: 40 people  
.....

.....  
Event Type: Ceremony  
.....





# WEDDING PHOTOGRAPHY

Set across 416 hectares of rolling hills, woodlands, lakes, lawns, architecture and lush greenery, the Garden offers endless beautiful backdrops for your wedding photos.

With a photography permit, you have the freedom to explore the Garden at your own pace and discover the perfect spots to capture your special day. With the added flexibility of no set times, you can book a two-hour session that fits seamlessly into your wedding schedule. Enjoy botanic beauty as you create memories that will last a lifetime.





Capture unforgettable moments in the stunning Australian Botanic Garden Mount Annan.









AUSTRALIAN BOTANIC GARDEN MOUNT ANNAN

Stunning and versatile locations with lush greenery and perfectly manicured lawns, our idyllic spaces provide enchanting settings that can be styled to suit any theme.

DHARAWAL COUNTRY



# DISCOVER OUR OTHER BOTANIC GARDENS

For more inspiration, consider visiting our other two world-renowned botanic gardens – Royal Botanic Garden Sydney and Blue Mountains Botanic Garden Mount Tomah. Each offers a unique collection of plants and beautiful surroundings.



Located in the heart of the city, Royal Botanic Garden Sydney is Australia's oldest botanic garden. It features a stunning mix of native and exotic plants, vast lawns and event venues with breathtaking views of the harbour.





At Blue Mountains Botanic Garden Mount Tomah, immerse yourself in the beauty of cool-climate plants and basalt cap forests. Celebrate your special day amongst stunning views of the surrounding UNESCO World Heritage Area wilderness.







# Wedding enquiries

For enquiries, bookings and photography permits, contact our Venues team:

[mtannan.events@botanicgardens.nsw.gov.au](mailto:mtannan.events@botanicgardens.nsw.gov.au)



Scan the QR code to  
explore our venues online:







**BOTANIC  
GARDENS  
OF SYDNEY**

---

**Dharawal Country**  
Australian Botanic Garden  
Mount Annan  
362 Narellan Road  
Mount Annan NSW 2567, Australia

---

**Gadigal Country**  
Royal Botanic Garden Sydney  
and The Domain Sydney  
Mrs Macquaries Road  
Sydney NSW 2000, Australia

---

**Darug Country**  
Blue Mountains Botanic Garden  
Mount Tomah  
Bells Line of Road  
Mount Tomah NSW 2758, Australia

---

Discover more  
**[BOTANICGARDENS.ORG.AU](http://BOTANICGARDENS.ORG.AU)**