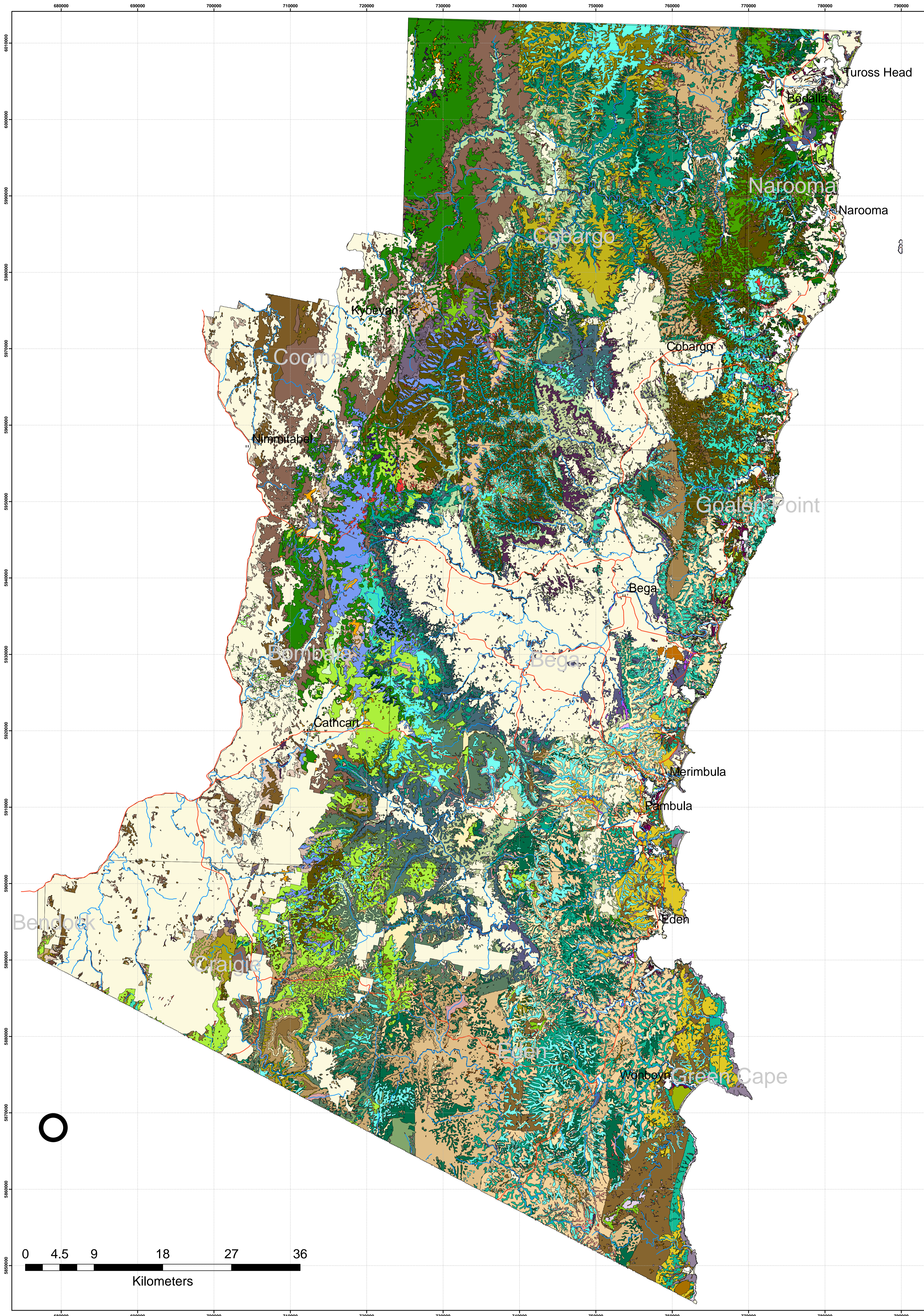


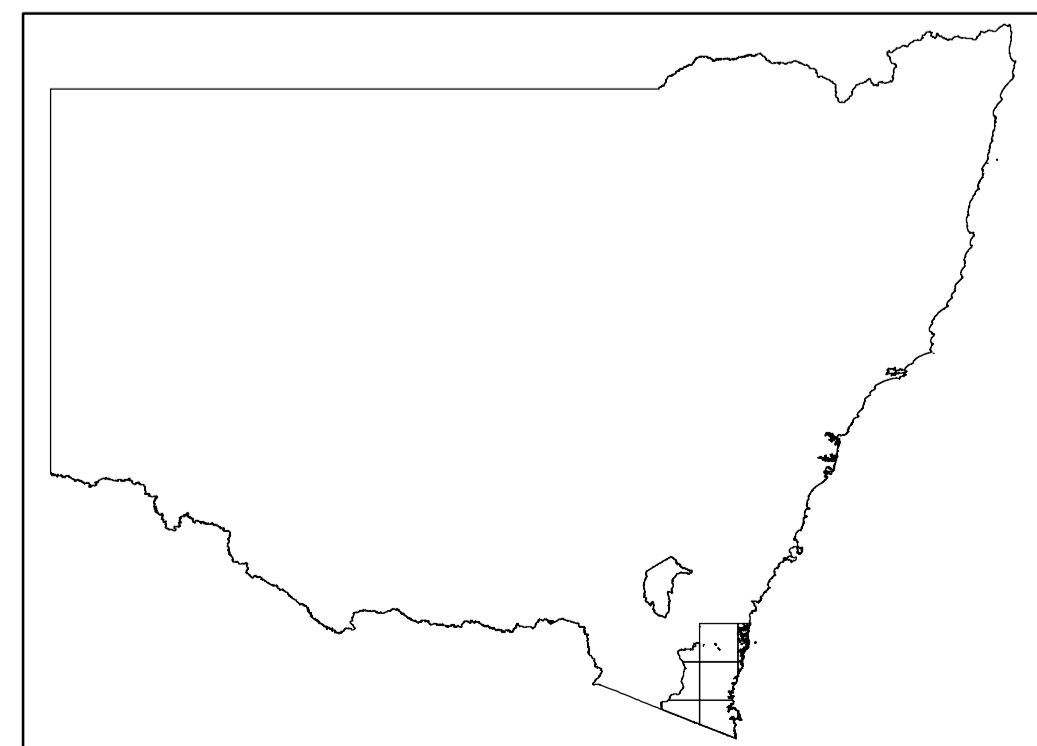
Vegetation - Southeast NSW



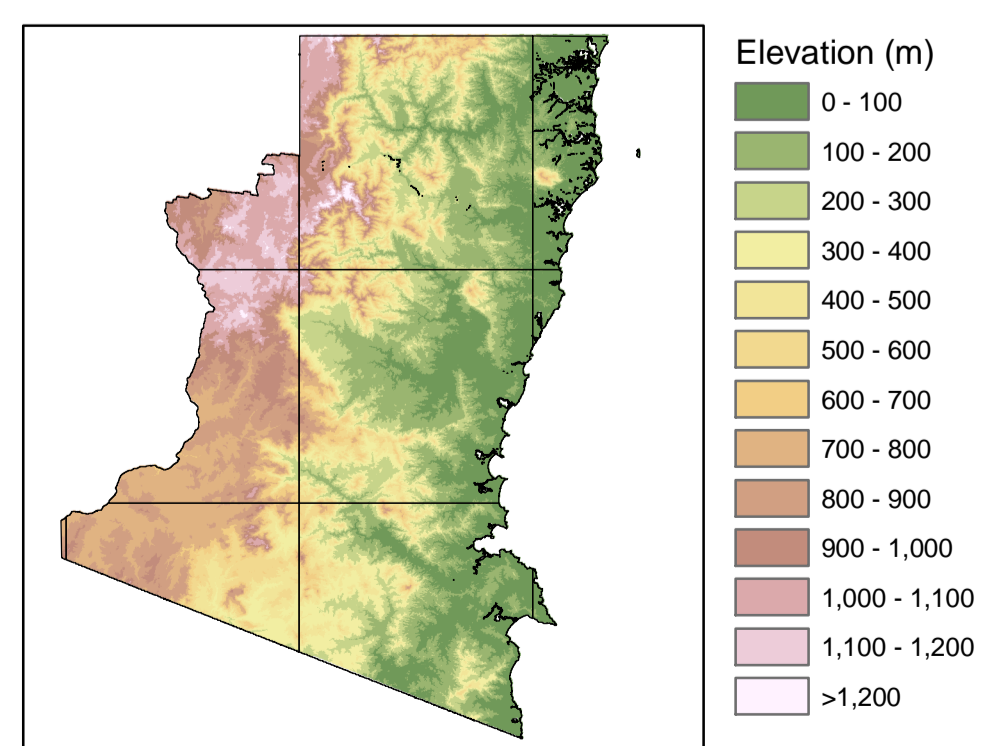
VEGETATION KEY

- Rainforests**
 - RFc1 - Southeast Dry Rainforest
 - RFc6e7 - Southeast Warm Temperate Rainforest
 - RFc40 - Temperate Dry Rainforest
 - RFc113 - Coastal Warm Temperate Rainforest
 - RFc116 - Intermediate Temperate Rainforest
 - RFc210 - Temperate Littoral Rainforest
 - RFc317 - Southeast Cool Temperate Rainforest
- Wet Sclerophyll Forests (shrubby)**
 - WSFc9 - Southeast High Mountain Wet Layered Forest
 - WSFc10 - Southeast Mountain Wet Layered Forest
 - WSFc11 - Tantawangalo Wet Shrub Forest
 - WSFc12 - Mountain Wet Fern Forest
 - WSFc13 - Southeast Hinterland Wet Fern Forest
 - WSFc14 - Southeast Hinterland Wet Shrub Forest
 - WSFc34 - Southeast Coastal Gully Shrub Forest
 - WSFc37 - Southeast Lowland Gully Shrub Forest
 - WSFc42 - Southeast Inland Intermediate Shrub Forest
 - WSFc183 - South Coast Hinterland Wet Forest
 - WSFc184 - Clyde-Turuss Hinterland Forest
- Wet Sclerophyll Forests (grassy)**
 - WSFc15 - Southeast Mountain Wet Herb Forest
 - WSFc66 - Highland Range Sheltered Forest
 - WSFc78 - Southern Escarpment Ash Forest
 - WSFc86 - Murrumbidgee Lowlands Forest
 - WSFc90 - Batemans Bay Cycad Forest
 - WSFc100 - Escarpment Foothills Wet Forest
 - WSFc338 - Southern Range Wet Forest
- Grassy Woodlands**
 - GWc18 - Brogo Wet Vine Forest
 - GWc20p229 - Southeast Lowland Grassy Woodland
 - GWc24 - Southeast Sub-alpine Dry Shrub Forest
 - GWc20 - Tableland Basalt Forest
 - GWc22 - Frost Hollow Grassy Woodland
 - GWc23 - Tableland Hills Grassy Woodland
 - GWc24 - Tableland Grassy Box-Gum Woodland
 - GWc220 - Southern Tableland Flats Forest
 - GWc520 - Tableland Swamp Flats Forest
- Grasslands**
 - GLc23a - Monaro Grassland
 - GLm68 - Southeast Tablelands Grassy Wetlands Complex
 - GLc34 - Headland Grassland
- Dry Sclerophyll Forest (grassy)**
 - DSFc19 - Bega Wet Shrub Forest
 - DSFc27 - Waalimma Dry Grass Forest
 - DSFc28 - Wog Wog Dry Grass Forest
 - DSFc29 - Nalbaugh Dry Grass Forest
 - DSFc30 - Wallagarah Dry Grass Forest
 - DSFc31 - Southeast Hinterland Dry Grass Forest
 - DSFc35 - Southeast Escarpment Dry Grass Forest
- Dry Sclerophyll Forest (shrubby)**
 - DSFc3 - Rocky Tops Dry Scrub Forest
 - DSFc4 - Brogo Shrub Forest
 - DSFc25 - Southeast Sandstone Dry Shrub Forest
 - DSFc26 - Southeast Tableland Dry Shrub Forest
 - DSFc32a - Deua-Brogo Foothills Dry Shrub Forest
 - DSFc32b - Far South Coastal Foothills Dry Shrub Forest
 - DSFc33 - Southeast Coastal Range Dry Shrub Forest
 - DSFc43 - Southeast Mountain Sandstone Shrub Forest
 - DSFc44 - Southeast Foothills Dry Shrub Forest
 - DSFc45 - Southeast Mountain Dry Shrub Forest
 - DSFc46a - Timbillica Dry Shrub Forest
 - DSFc46b - Southeast Lowland Dry Shrub Forest
 - DSFc47 - Eden Dry Shrub Forest
 - DSFc48 - Mumbulla Dry Shrub Forest
 - DSFc49 - Southeast Coastal Dry Shrub Forest
 - DSFc50 - Genoa Dry Shrub Forest
 - DSFc61 - Coastal Foreland Scrub
 - DSFcW1 - Wadbilliga Dry Shrub Forest
 - DSFcW5 - Wadbilliga Gorge Dry Forest
 - DSFc8 - Tableland Ridge Forest
 - DSFc14 - Western Tablelands Dry Forest
 - DSFc64 - Coastal Sand Forest
 - DSFc89 - Batemans Bay Foothills Dry Forest
 - DSFc91 - Clyde-Deua Open Forest
 - DSFc98 - Clyde-Deua Ridgetop Forest
 - DSFc248 - Morton-Budawang Sandstone Woodland
- Heathlands**
 - HLc51 - Southeast Rhyolite Rock Scrub
 - HLc52 - Southeast Mountain Rock Scrub
 - HLc53 - Southern Montane Heath
 - HLc54 - Mt Nadgee Heath
 - HLc55 - Southeast Coastal Lowland Heath
 - HLcW3 - Wadbilliga Heath Forest
 - HLm83 - South Coast Headland Scrub
 - HLp63 - Littoral Thicket
- Freshwater Wetlands**
 - FrWe56 - Southeast Hinterland Heath
 - FrWe57 - Southeast Lowland Swamp
 - FrWe59 - Southeast Sub-alpine Bog
 - FrWp313 - Coastal Freshwater Lagoon
- Forested Wetlands**
 - FoWe17 - Southeast Flats Swamp Forest
 - FoWe38 - Far Southeast Riparian Scrub
 - FoWe39 - Bega-Towamba Riparian Scrub
 - FoWe60 - Southeast Floodplain Wetlands
 - FoWm15 - Eden Shrubby Swamp Woodland
 - FoWp30 - South Coast River Flat Forest
 - FoWp32 - Riverbank Forest
 - FoWp105 - Floodplain Swamp Forest
 - FoWp106 - Estuarine Fringe Forest
 - FoWp107 - Estuarine Creekflat Scrub
- Saline Wetlands**
 - SLc65 - River Mangrove
 - SLc67 - Seagrass Meadow (Halophila)
 - SLc68 - Seagrass Meadow (Posidonia)
 - SLc69 - Seagrass Meadow (Ruppia)
 - SLc70 - Seagrass Meadow (Zostera)
 - SLp109 - Estuarine Mangrove Forest
 - SLp509 - Estuarine Saltmarsh
- Non-Native/Not-Vegetated Areas**
 - NV - Disturbed and modified areas

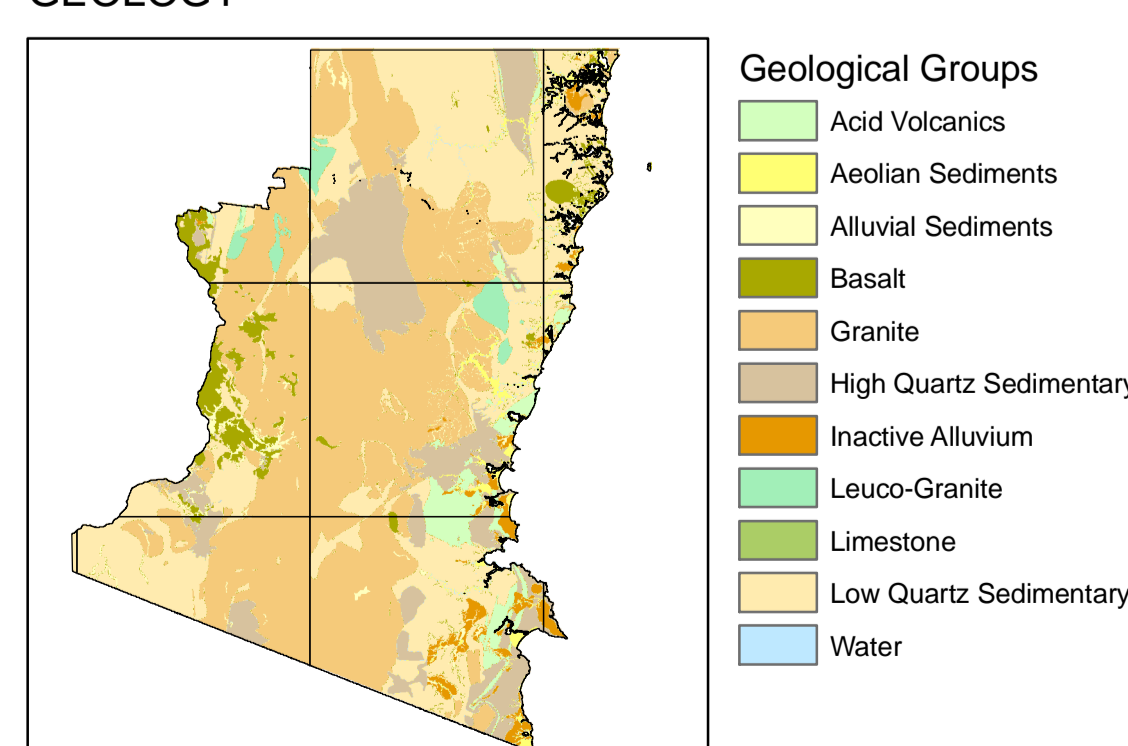
LOCALITY DIAGRAM



LANDFORM



GEOLOGY



Map Legend

- Selected towns
- Major roads
- River or creek
- 1:100 000 map tiles

TRANSVERSE MERCATOR PROJECTION
Horizontal Datum: Geocentric Datum of Australia 1994
Numbered grid lines are 10 kilometre intervals of the Australian Map Grid, Zone 55.
Edition 4, May 2010
SCALE 1:200 000

Map compiled by staff of the Scientific Services Division, NSW Department of Environment, Climate Change & Water.

* Drainage data supplied by NSW Department of Lands, Panorama Ave Bathurst NSW 2795.
* Geological data supplied by the Department of Mineral Resources, PO Box 536 St Leonards NSW 1590.

The information contained in and by this map has been compiled from several sources and may contain errors and omissions. No warranty or representation, expressed or implied, is made with respect to the accuracy of this information, or its suitability for any purpose. The NSW Department of Environment, Climate Change & Water disclaims all and any liability to any person in respect of anything done or omitted to be done in reliance, whether wholly or in part, upon this information.

This map is only reliable at the published scale of 1:100 000.
Copyright New South Wales Government. All Rights Reserved.
No part of this map may be reproduced without permission.



Environment,
Climate Change
& Water