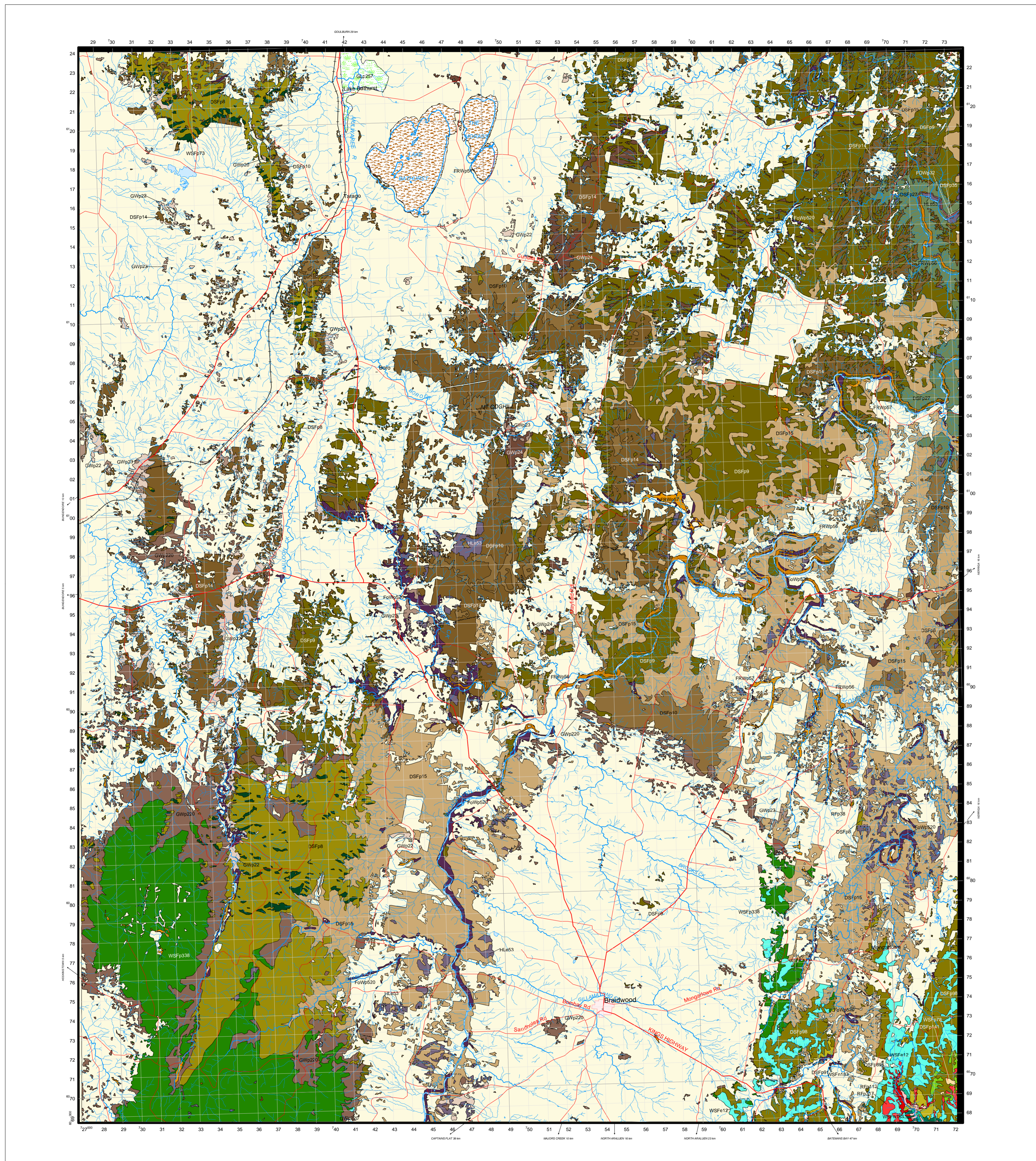
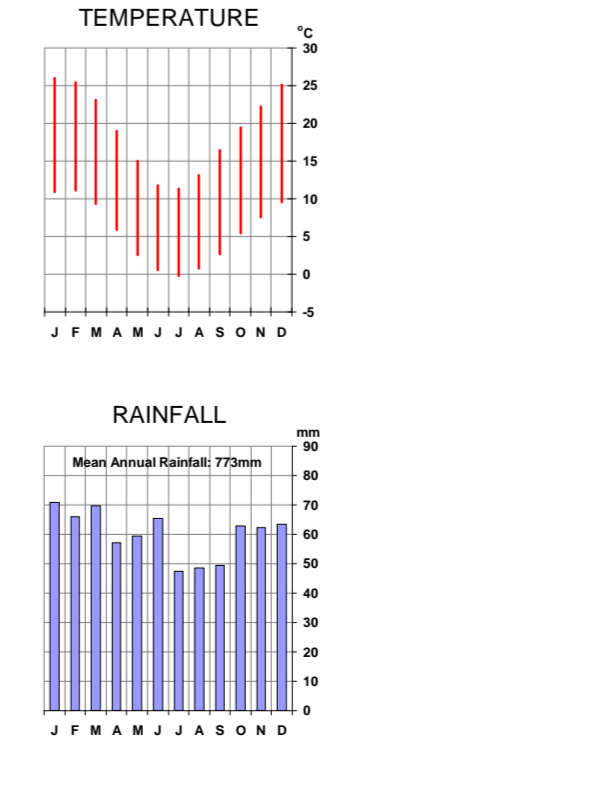
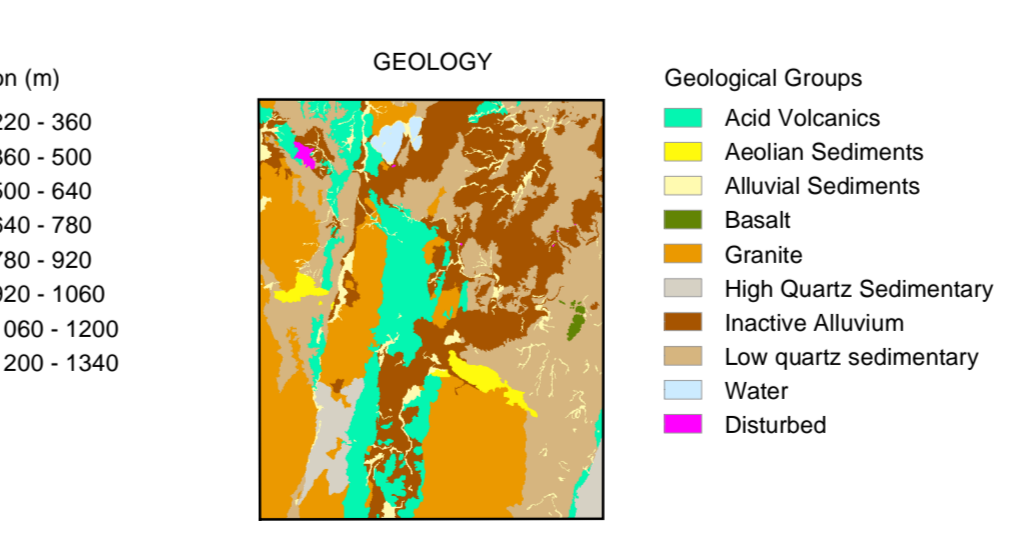
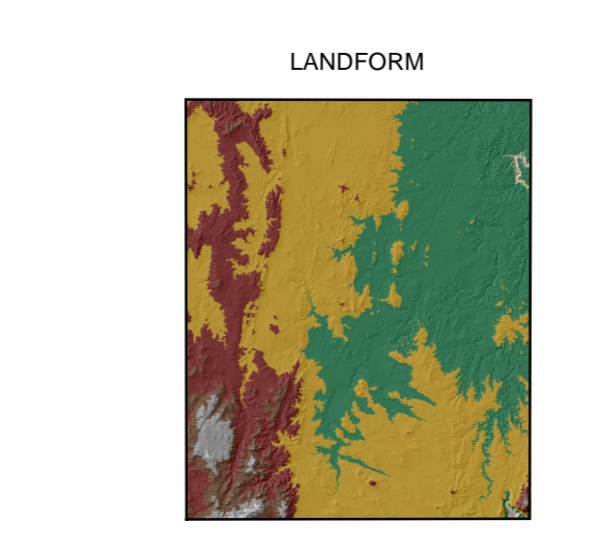
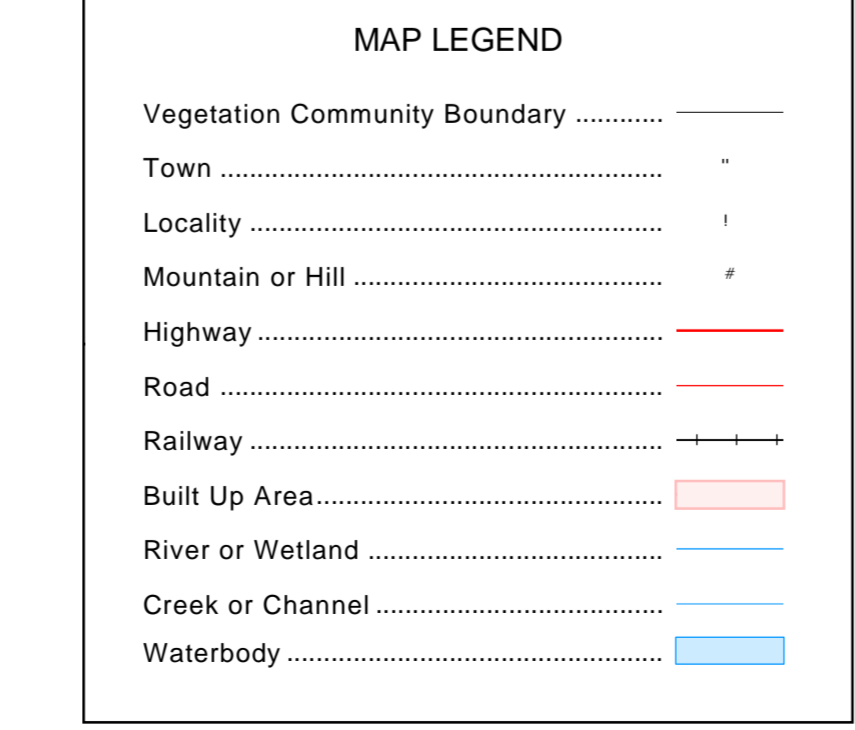
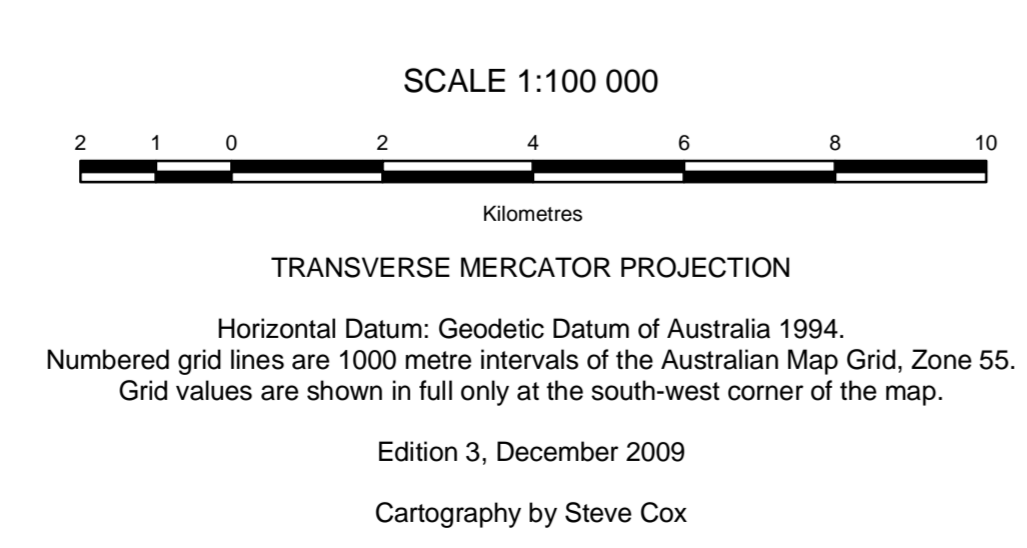
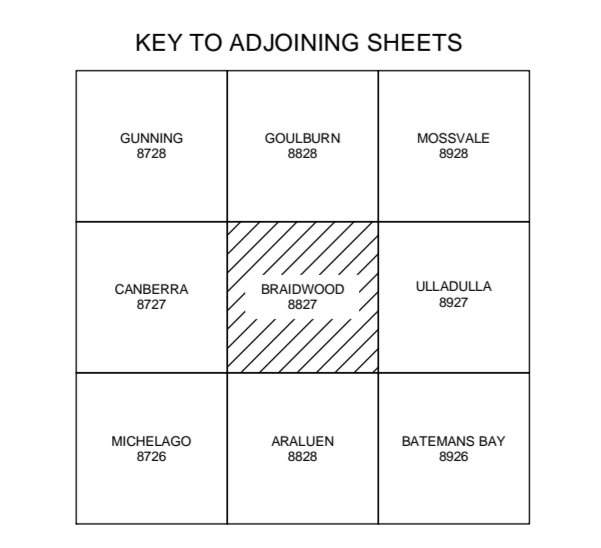
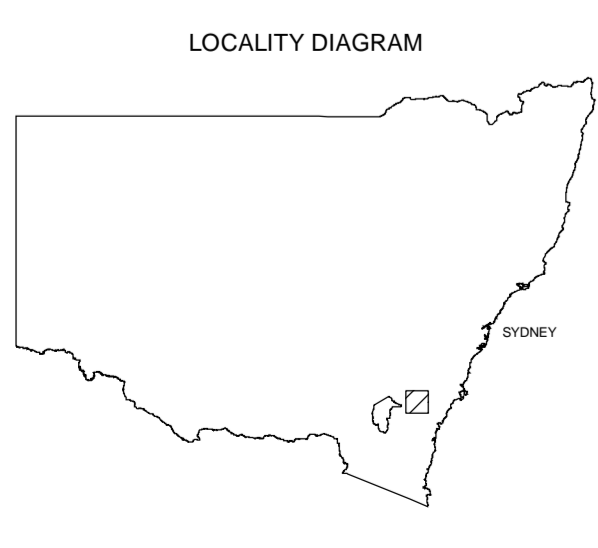


VEGETATION BRAIDWOOD - 8827

VEGETATION KEY



A-N Map Unit Code	Map Unit Name	Principal Species	Vegetation Structure	Physical Environment	Area (ha) (Percent)
Rainforests	RF p38 Grey Myrtle Dry Rainforest	Trees: <i>Bachousia myrtilloides</i> , <i>Nelusetta obtusifolia</i> , <i>Hymenanthus dentatus</i> , <i>Sphaecobea orientalis</i> , <i>Geleophila cymosa</i> , <i>Pandorea pandanorum</i> , <i>Aphanopetalum resinatum</i> , <i>Eumyrtus laetifolia</i> , <i>Corymbia clemensii</i> , <i>Grindocarpus</i> , <i>Adiantum austroricum</i> , <i>Asplenium fallaxifolium</i> , <i>Ptilotheca laetifolia</i> , <i>Elaeocarpus</i> spp., <i>Microseris stipoides</i> , <i>Opilimenus imbecilis</i> , <i>Desmodium varians</i> , <i>Pterocarpus</i>	Simple, low closed forest with sparse groundcover.	Steep lower slopes of dry gorges below 500m, Pictou, Kowmung-Watandilly, Shoalhaven-Eremera.	20
RF p40 Temperate Dry Rainforest	Trees: <i>Bachousia myrtilloides</i> , <i>Acmena smithii</i> , <i>Pittosporum undulatum</i> , <i>Shrub: Pittosporum revolutum</i> , <i>Bryonia oblongifolia</i> , <i>Ficus coronata</i> , <i>Nelusetta venosa</i> , <i>Rapanea howittiana</i> , <i>Climbers: Miconia jasminoides</i> , <i>Cissis hypoglauca</i> , <i>Epistemon austroriparium</i> , <i>Pandorea pandanorum</i> , <i>Smilax aspera</i> , <i>Marsdenia rosata</i> , <i>Geleophila cymosa</i> , <i>Parsonsia linearis</i> , <i>Opilimenus imbecilis</i>	Simple closed forest with lanes and sparse groundcover.	Dry shale gullies below 400m, Hawkbury-Deua.	<10	
RF p113 Coastal Warm Rainforest	Trees: <i>Acmena smithii</i> , <i>Livistona australis</i> , <i>Conocarpus oleraceus</i> , <i>Cyrtocarpus glaucocarpus</i> , <i>Syzygium glandulosum</i> , <i>Shrub: Tamarix aegyptiaca</i> , <i>Eucalyptus laevis</i> , <i>Ficus coronata</i> , <i>Psychotria boreocarpa</i> , <i>Climbers: Miconia jasminoides</i> , <i>Smilax aspera</i> , <i>Microseris stipoides</i> , <i>Pandorea pandanorum</i> , <i>Parsonsia linearis</i> , <i>Cissis hypoglauca</i> , <i>Pyrosoma rupestre</i> , <i>Arthropodium laetifolium</i> , <i>Grindocarpus</i> , <i>Lastroscopium microseris</i> , <i>Blechnum cartilagineum</i> , <i>B. patersonii</i> , <i>Asplenium australicum</i> , <i>Doodia aspera</i>	Closed forest with lanes and ferny groundcover.	Clay loams, most sheltered gullies below 400m, Riverside escarp & Clyde district.	40	
RF p116 Intermediate Temperate Rainforest	Trees: <i>Acmena smithii</i> , <i>Pittosporum undulatum</i> , <i>Dryopteris sassafras</i> , <i>Shrub: Cycas australis</i> , <i>Coprosma quadrifida</i> , <i>Nelusetta venosa</i> , <i>Rapanea howittiana</i> , <i>Climbers: Pandorea pandanorum</i> , <i>Smilax aspera</i> , <i>Marsdenia rosata</i> , <i>Eumyrtus laetifolia</i> , <i>Typhophora bartramii</i> , <i>Microseris stipoides</i> , <i>Desmodium varians</i> , <i>Grindocarpus</i> , <i>Asplenium fallaxifolium</i> , <i>Lastroscopium microseris</i>	Closed forest with lanes and ferny groundcover.	Moist sheltered gullies and slopes on foothills and escarpment, 300-750m, mainly Morton-Deua.	70	
RF p317 Southeast Cool Groundcover	Trees: <i>Eucalyptus masonii</i> , <i>Shrub: Dicksia australis</i> , <i>Cyathochaeta aemula</i> , <i>Climbers: Smilax aspera</i> , <i>Microseris stipoides</i> , <i>M. scandens</i> , <i>Parsonsia linearis</i> , <i>Pandorea pandanorum</i> , <i>Grindocarpus: Falckia australis</i> , <i>Polypodium venosum</i> , <i>Pyrosoma rupestre</i> , <i>Lastroscopium acuminatum</i> , <i>Australianus pulchellus</i> , <i>Blechnum patersonii</i> , <i>B. watsonii</i> , <i>Polystichum profluvium</i> , <i>Asplenium fallaxifolium</i>	Simple closed forest with ferny groundcover.	Moist sheltered gullies with loamy soils, 550-1050m, Budawang-Deua mtns.	140	
Wet Sclerophyll Forests (shrubby)	WSF p412 Mountain Wet Fern Forest	Trees: <i>Beaufortia arborescens</i> , <i>Cyathochaeta aemula</i> , <i>Eucalyptus cyathochaeta</i> , <i>Eucalyptus fastigata</i> Shrub: <i>Coprosma quadrifida</i> , <i>Leucopogon lanceolatus</i> var. <i>lanceolatus</i> Climbers: <i>Climatis aristata</i> , <i>Smilax aspera</i> , <i>Typhophora bartramii</i> Groundcover: <i>Blechnum cartilagineum</i> , <i>Calochortus subulatus</i> , <i>Geleophila cymosa</i> , <i>Goodea ovata</i> , <i>Heterocline rufifolia</i> , <i>Lepidosiphon stipulatus</i> , <i>Phoradendron esculentum</i> , <i>Dactyloctenium aegyptium</i>	Tall eucalypt forest with understory of scattered shrubs and tree ferns, and a moist ferny groundcover.	Steep sheltered grassy slopes at 450-1200m on the escarpment range south of Cypess Mountain and on some outlying mountains.	1900
WSF p183 South Coast Hinterland Wet Forest	Trees: <i>Cyathochaeta aemula</i> , <i>Elaeocarpus micranthus</i> , <i>Eucalyptus cyathochaeta</i> , <i>Eucalyptus muelleriana</i> , <i>Pittosporum undulatum</i> , <i>Syzygium glandulosum</i> Shrub: <i>Leucopogon lanceolatus</i> var. <i>lanceolatus</i> , <i>Nelusetta venosa</i> , <i>Parsonsia linearis</i> , <i>Pittosporum revolutum</i> Climbers: <i>Blechnum cartilagineum</i> , <i>Cissis hypoglauca</i> , <i>Eumyrtus laetifolia</i> , <i>Geleophila cymosa</i> , <i>Hibbertia obtusifolia</i> , <i>Pandorea pandanorum</i> , <i>Smilax aspera</i> , <i>Typhophora bartramii</i> Groundcover: <i>Blechnum cartilagineum</i> , <i>Calochortus subulatus</i> , <i>Desmodium varians</i> , <i>Dianella caerulea</i> , <i>Doodia aspera</i> , <i>Gardia melaleucoides</i> , <i>Goodea ovata</i> , <i>Heterocline rufifolia</i> , <i>Opilimenus imbecilis</i> , <i>Psidium</i>	Tall eucalypt forest with prominent sub-strata of small trees, tree ferns, most shrubs and many vines over a dense groundcover of ferns and graminoids.	Predominantly on sandy loam soils, in moist sheltered gullies and slopes on the low coastal ranges from over a dense groundcover of ferns and graminoids.	40	
WSF p184 Clyde-Turonis Hinterland Forest	Trees: <i>Acacia melanocorynia</i> , <i>Eucalyptus muelleriana</i> , <i>Pittosporum undulatum</i> Shrub: <i>Bryonia oblongifolia</i> , <i>Indigofera australis</i> , <i>Nelusetta venosa</i> Climbers: <i>Climatis aristata</i> var. <i>gymnoclada</i> , <i>Eumyrtus laetifolia</i> , <i>Geleophila cymosa</i> , <i>Glycine cladostriata</i> , <i>Hibbertia obtusifolia</i> , <i>Marsdenia rosata</i> , <i>Pandorea pandanorum</i> , <i>Parsonsia linearis</i> , <i>Desmodium varians</i> , <i>Desmodium ssp.</i> , <i>Doodia aspera</i> , <i>Gardia melaleucoides</i> , <i>Goodea ovata</i> , <i>Lepidosiphon stipulatus</i> , <i>Microseris stipoides</i> , <i>Opilimenus imbecilis</i> , <i>Ptilotheca laetifolia</i> , <i>Psychotria boreocarpa</i> , <i>Stellaria facialis</i>	Tall eucalypt forest with sub-strata of vine laden small trees and shrubs over a dense groundcover of ferns, graminoids and small forbs.	Sandy loam soils along the coastal range from Currawong to Tallinn, isolated examples further west around Wadliffa.	30	
WSF p73 Cool Montane Wet Forest	Trees: <i>Eucalyptus muelleriana</i> , <i>Eucalyptus fastigata</i> , <i>Shrub: Leucopogon lanceolatus</i> , <i>Climatis aristata</i> , <i>Smilax aspera</i> , <i>Microseris stipoides</i> , <i>Opilimenus imbecilis</i> , <i>Psidium esculentum</i> , <i>Lomandra longifolia</i> , <i>Viola heterocarpa</i>	Tall eucalypt forest with an open shrub layer and most herbaceous groundcover.	Elevated ranges on moist loams 800-1250m Dividing Range-Litlogah-Talgarangs.	690	
Wet Sclerophyll Forests (grassy)	WSF p66 Highland Range Shattered Forest	Trees: <i>Eucalyptus datta</i> , <i>E. radiata</i> , <i>E. fastigata</i> , <i>Shrub: Leucopogon lanceolatus</i> , <i>Rubus parviflorus</i> , <i>Climbers: Climatis aristata</i> , <i>Glycine cladostriata</i> , <i>Grindocarpus: Phoradendron esculentum</i> , <i>Lomandra longifolia</i> , <i>Viola heterocarpa</i> , <i>Microseris stipoides</i> , <i>Dichondra ssp.</i> , <i>Desmodium varians</i> , <i>Parsonsia linearis</i> , <i>Veronica peltata</i> , <i>Stellaria purpurascens</i> , <i>Platycodon grandiflorus</i>	Tall eucalypt forest with an open shrub layer and most herbaceous groundcover.	Sheltered slopes on high ranges, mainly 600-1100m, western Blue Mtns - Deua.	<10
WSF p75 Southern Escarpment Ash Forest	Trees: <i>Eucalyptus frankii</i> , <i>E. fastigata</i> , <i>Shrub: Leucopogon lanceolatus</i> , <i>Psychopogon lanceolatus</i> , <i>Acacia obliquifera</i> , <i>Lonitis fraseri</i> , <i>Parsonsia linearis</i> , <i>Grindocarpus: Phoradendron esculentum</i> , <i>Dianella isomacra</i> , <i>Stylium graminifolium</i> , <i>Psidium esculentum</i>	Eucalypt forest with open shrub layer and groundcover.	Steep, most upper slopes in dissected terrain, 700-1200m, Budawang-Deua, Talgarangs.	100	
WSF p338 Southern Range Wet Forest	Trees: <i>Eucalyptus fastigata</i> , <i>E. jaculiformis</i> , <i>Shrub: Acacia dealbata</i> , <i>Leucopogon lanceolatus</i> , <i>Parsonsia linearis</i> , <i>Climatis aristata</i> , <i>Grindocarpus: Stellaria purpurea</i> , <i>Acacia rosea-zelandica</i> , <i>Psidium esculentum</i> , <i>Viola heterocarpa</i> , <i>Parsonsia linearis</i> , <i>Asplenium scoparium</i> , <i>Dianella isomacra</i> , <i>Hibbertia obtusifolia</i> , <i>Phoradendron esculentum</i> , <i>Veronica calycosa</i> , <i>Lagenaria siliques</i> , <i>Lepidosiphon stipulatus</i> , <i>Viola heterocarpa</i> , <i>Ranunculus leptocarpus</i>	Eucalypt forest with open shrub layer and groundcover of diverse forbs & grasses.	High slopes and ridges with moist soils 900-1300m, Talgarangs Ranges.	9600	
Grassy Woodlands	GW p20 Tableland Basalt Forest	Trees: <i>Acacia melanocorynia</i> , <i>Eucalyptus viminalis</i> , <i>E. radiata</i> , <i>Grindocarpus: Microseris stipoides</i> , <i>Stellaria purpurea</i> , <i>Phoradendron esculentum</i> , <i>Acacia rosea-zelandica</i> , <i>Dichondra ssp.</i> , <i>Geranium solanderi</i> , <i>Hydrocotyle laetifolia</i> , <i>Desmodium varians</i> , <i>Erigeron ovatus</i> , <i>Austrodorotheca racemosa</i> , <i>Austrostrophia radiata</i> , <i>Plantago varia</i> , <i>Viola heterocarpa</i>	Eucalypt forest with sparse shrubs and dense groundcover of forbs & grasses.	Undulating basalt tablelands, 600-1200m, Oberon-Moss Vale.	10
GW p22 Frost Hollow Grassy Woodland	Trees: <i>Eucalyptus pauciflora</i> , <i>E. rubida</i> , <i>Grindocarpus: Themeda australis</i> , <i>Gonocarpus tetragynus</i> , <i>Microseris stipoides</i> , <i>Hypericum graminum</i> , <i>Chrysanthemum apiculatum</i> , <i>Psidium esculentum</i> , <i>Asplenium confertum</i> , <i>Elymus caput-medusae</i>	Open eucalypt forest with sparse shrub layer and dense grass groundcover.	Frost-hollow flats on undulating tableland 600-900m, Abernethy-Braidwood.	2100	
GW p23 Tableland Hills Grassy Woodland	Trees: <i>Eucalyptus datta</i> , <i>E. macrorhyncha</i> , <i>Shrub: Melaleuca uncinata</i> , <i>Grindocarpus: Microseris stipoides</i> , <i>Gonocarpus tetragynus</i> , <i>Lomandra filiformis</i> ssp. <i>concolor</i> , <i>Hydrocotyle laetifolia</i> , <i>Hypericum graminum</i> , <i>Hibbertia obtusifolia</i> , <i>Goodea ovata</i> , <i>Oxalis permaria</i> , <i>Austrodorotheca racemosa</i>	Open eucalypt forest with sparse shrub layer and grassy groundcover.	Undulating hills on tableland 550-1100m, Hartley-Braidwood.	540	
GW p24 Tableland Grassy Gum Woodland	Trees: <i>Eucalyptus melliodora</i> , <i>E. dives</i> , <i>E. macrorhyncha</i> , <i>Shrub: Lassafraea stipitata</i> , <i>Melaleuca uncinata</i> , <i>Grindocarpus: Lomandra filiformis</i> ssp. <i>concolor</i> , <i>Themeda australis</i> , <i>Microseris stipoides</i> , <i>Gonocarpus tetragynus</i> , <i>Hydrocotyle laetifolia</i> , <i>Psidium esculentum</i> , <i>Austrodorotheca racemosa</i> , <i>Goodea ovata</i>	Eucalypt woodland with sparse shrub layer and grassy groundcover.	Loamy soils on undulating tableland 600-900m, Abernethy River-Braidwood.	1200	
GW p25 Southern Tableland Flats Forest	Trees: <i>Eucalyptus viminalis</i> , <i>E. pauciflora</i> , <i>Acacia melanocorynia</i> , <i>E. radiata</i> , <i>Shrub: Rubus parviflorus</i> , <i>Grindocarpus: Microseris stipoides</i> , <i>Dichondra ssp.</i> , <i>Glycine cladostriata</i> , <i>Desmodium varians</i> , <i>Lomandra longifolia</i> , <i>Themeda australis</i> , <i>Phoradendron esculentum</i> , <i>Acacia rosea-zelandica</i> , <i>Psidium esculentum</i> , <i>Gonocarpus tetragynus</i> , <i>Asplenium graminum</i>	Open eucalypt forest with sparse shrub layer and continuous grassy groundcover.	Alluvial fans in headwaters of streams 600-1100m, Braidwood-Big Bend.	6500	
GW p420 Tableland Granite Grassy Woodland	Trees: <i>Eucalyptus viminalis</i> , <i>E. melliodora</i> , <i>Shrub: Rubus parviflorus</i> , <i>Acacia melanocorynia</i> , <i>Climbers: Glycine cladostriata</i> , <i>Grindocarpus: Hydrocotyle laetifolia</i> , <i>Microseris stipoides</i> , <i>Acacia rosea-zelandica</i> , <i>Geranium solanderi</i> , <i>Lomandra filiformis</i> ssp. <i>concolor</i> , <i>Rumex crispus</i> , <i>Dichondra ssp.</i> , <i>Desmodium varians</i> , <i>Stellaria purpurea</i> , <i>Themeda australis</i> , <i>Austrodorotheca racemosa</i> , <i>Hypericum graminum</i>	Eucalypt woodland with sparse shrub layer and grassy groundcover.	Rufous granite terraces 550-1050m on the tablelands.	<10	
Grasslands	GL p251 Tableland Flats Grassland	Poa spp., Carex spp., Juncus spp., <i>Themeda australis</i> , <i>Austrodorotheca ssp.</i> and <i>Austrostrophia ssp.</i>	Closed tussock grassland	Flats and depressions on the southern tablelands from Goulburn to Braidwood, 650-750m.	460
Dry Sclerophyll Forests (shrubby/grassy)	DSF p11 Elevated Gorge Forest	Trees: <i>Eucalyptus pauciflora</i> , <i>E. agglomerata</i> , <i>Shrub: Parsonsia linearis</i> , <i>Phytolacca fruticosa</i> , <i>Hibbertia obtusifolia</i> , <i>Dianella caerulea</i> , <i>Potamogeton ilicifolius</i> , <i>Climbers: Heterocline volucrea</i> , <i>Blechnum cartilagineum</i>	Eucalypt forest with open understory of sclerophyll shrubs & grasses	Dry upper slopes of rocky gorges 400-850m, upper Watandilly & Shoalhaven gorges.	<10
DSF p27 Bungahilly Slates Woodland	Trees: <i>Eucalyptus basilaris</i> , <i>E. macrorhyncha</i> , <i>Shrub: Chenia vicioides</i> , <i>Lassafraea stipitata</i> , <i>Cassinia uncinata</i> , <i>Daviesia tetragyna</i> , <i>Climbers: Climatis microphylla</i> , <i>Grindocarpus: Dianella revoluta</i> , <i>Lomandra filiformis</i> , <i>L. multiflora</i> , <i>Goodea ovata</i> , <i>Oxalis permaria</i> , <i>Psidium esculentum</i>	Eucalypt woodland with sparse understory of sclerophyll shrubs, sedges & grasses.	Loams on slates and shales in steep gorges 300-600m, Braidwood-Big Bend.	2000	
DSF p33 Wollindilly-Cox Shoalhaven Gorge Woodland	Trees: <i>Eucalyptus viminalis</i> , <i>Brachyotum papuosum</i> , <i>E. melliodora</i> , <i>Shrub: Oxera vicioides</i> , <i>Bursaria spinosa</i> , <i>Lassafraea stipitata</i> , <i>Climbers: Glycine cladostriata</i> , <i>Climatis aristata</i> , <i>Grindocarpus: Dichondra ssp.</i> , <i>Cheilanthes sedenii</i> , <i>Desmodium varians</i> , <i>Lomandra multiflora</i> , <i>L. longifolia</i> , <i>Anisida ramosa</i> , <i>Cheilanthes distans</i> , <i>Dichelone micrantha</i> , <i>Microseris stipoides</i> , <i>Desmodium brachypodum</i> , <i>Hypericum graminum</i> , <i>Veronica debilis</i> , <i>Wolstenholmea gracilis</i>	Eucalypt woodland with a mixed understory of shrubs, forbs & grasses.	Loams on dry slopes within rocky gorges 150-700m, gorges of Wollindilly & Shoalhaven.	<10	
Dry Sclerophyll Forests (shrubby)	DSF p8 Tableland Ridge Forest	Trees: <i>Eucalyptus sieberi</i> , <i>E. radiata</i> , <i>Shrub: Hibbertia obtusifolia</i> , <i>Parsonsia linearis</i> , <i>Leucopogon lanceolatus</i> , <i>Monotoca scoparia</i> , <i>Grindocarpus: Gonocarpus tetragynus</i> , <i>Phoradendron esculentum</i> , <i>Lomandra longifolia</i> , <i>Dianella revoluta</i> , <i>Psidium esculentum</i>	Eucalypt forest with open understory of sclerophyll shrubs, sedges & grasses	Sandy loams on ridges and dry slopes on high ranges 600-1200m, Hartley-Big Bend.	9600
DSF p9 Tableland Low Woodland	Trees: <i>Eucalyptus oasi</i> , <i>E. manillana</i> , <i>Shrub: Brachyotum diphyoides</i> , <i>Parsonsia linearis</i> , <i>Hibbertia obtusifolia</i> , <i>Allocasuarina littoralis</i> , <i>Melaleuca uncinata</i> , <i>Grindocarpus: Goodea ovata</i> , <i>Lepidosiphon stipulatus</i> , <i>Psidium esculentum</i> , <i>Asplenium confertum</i>	Low eucalypt woodland with open understory of sclerophyll shrubs, sedges, grass & forbs.	Sandy loams on low ridges on the tableland, 550-800m, Carrowong-Braidwood.	21700	
DSF p10 Eastern Tablelands Dry Forest	Trees: <i>Eucalyptus sieberi</i> , <i>E. agglomerata</i> , <i>Shrub: Parsonsia linearis</i> , <i>Allocasuarina littoralis</i> , <i>Hibbertia obtusifolia</i> , <i>Styphelia quadrifida</i> , <i>Climbers: Blechnum cartilagineum</i> , <i>Grindocarpus: Goodea ovata</i> , <i>Psidium esculentum</i> , <i>Asplenium confertum</i>	Open eucalypt forest with open understory of sclerophyll shrubs, sedges & forbs.	Sandy loams on ridges on the eastern tableland margin 550-900m, Jindilla-Braidwood.	17000	
DSF p14 Western Tablelands Dry Forest	Trees: <i>Eucalyptus macrorhyncha</i> , <i>E. manillana</i> , <i>E. nassi</i> , <i>E. dives</i> , <i>Shrub: Hibbertia obtusifolia</i> , <i>Brachyotum diphyoides</i> , <i>Daviesia tetragyna</i> , <i>Grindocarpus: Gonocarpus tetragynus</i> , <i>Lomandra filiformis</i> ssp. <i>concolor</i> , <i>Psidium esculentum</i> , <i>Goodea ovata</i> , <i>Dianella revoluta</i> , <i>Juncus pallidus</i> , <i>Novae Invenis</i>	Low eucalypt forest with open understory of sclerophyll shrubs, grasses & forbs.	Sandy loams on ridges of the tableland interior 550-1150m, Walkaway-Captains Flat.	5400	
DSF p15 Braidwood Dry Forest	Trees: <i>Eucalyptus dives</i> , <i>E. manillana</i> , <i>E. radiata</i> , <i>Shrub: Brachyotum diphyoides</i> , <i>Lomandra filiformis</i> , <i>Acacia gurnii</i> , <i>Grindocarpus: Goodea ovata</i> , <i>Dianella revoluta</i> , <i>Novae Invenis</i> , <i>Stylium graminifolium</i> , <i>Gonocarpus tetragynus</i> , <i>Psidium esculentum</i> , <i>Hibbertia obtusifolia</i> , <i>Lomandra multiflora</i>	Low eucalypt forest with open understory of sclerophyll shrubs, grasses & forbs.	Sandy loams on dry tableland ridges 600-1100m, Nerang-Captains Flat.	28900	
DSF p88 Batmans Bay Foothills Dry Forest	Trees: <i>Eucalyptus agglomerata</i> , <i>E. sieberi</i> , <i>E. concolor</i> , <i>Shrub: Corymbia gummitera</i> , <i>Shrub: Parsonsia linearis</i> , <i>Acacia dealbata</i> , <i>Phragmites lanceolata</i> , <i>Potamogeton ilicifolius</i> , <i>Tetrarrhena thymifolia</i> , <i>Barbarea spinulosa</i> , <i>Allocasuarina littoralis</i> , <i>Grindocarpus: Erubacca stricta</i> , <i>Dianella caerulea</i> , <i>Lomandra concolorifolia</i> ssp. <i>similis</i> , <i>Psidium umbellatum</i>	Eucalypt woodland with open understory of sclerophyll shrubs, grasses & forbs.	Sandy loams on ridges and dry slopes in coastal hills 50-600m, Yabbaroo-Eurobodalla.	20	
DSF p91 Clyde-Deua Open Forest	Trees: <i>Eucalyptus muelleriana</i> , <i>E. cyathochaeta</i> , <i>E. sieberi</i> , <i>Argemone floribunda</i> , <i>Shrub: Acacia fallaxima</i> , <i>Parsonsia linearis</i> , <i>Leucopogon lanceolatus</i> , <i>Acacia obtusifolia</i> , <i>Phragmites lanceolata</i> , <i>Climbers: Climatis aristata</i> , <i>Grindocarpus: Phoradendron esculentum</i> , <i>Dianella caerulea</i>	Eucalypt forest with open understory of sclerophyll shrubs, ferns & forbs.	Sandy loams on dry escarpment slopes, 300-950m, Budawang-Deua.	250	
DSF p98 Clyde-Deua Ridgtop Forest	Trees: <i>Eucalyptus sieberi</i> , <i>Shrub: Acacia obtusifolia</i> , <i>Parsonsia linearis</i> , <i>Amperea vicioides</i> , <i>Leucopogon lanceolatus</i> var. <i>lanceolatus</i> , <i>Phragmites lanceolata</i> , <i>Potamogeton ilicifolius</i> , <i>Tetrarrhena thymifolia</i> , <i>Climatis aristata</i> , <i>Grindocarpus: Phoradendron esculentum</i> , <i>Dianella caerulea</i>	Open eucalypt forest with open understory of sclerophyll shrubs, sedges & forbs.	Sandy loams on dry ridges 250-1100m, Budawang-Deua.	2500	
DSF p141 Budderoo-Morton Plains Forest	Trees: <i>Corymbia gummitera</i> , <i>Eucalyptus sieberi</i> , <i>E. alpestris</i> , <i>Shrub: Bosssea kiamensis</i> , <i>Acacia obtusifolia</i> , <i>Barbarea pulchella</i> , <i>Lepidosiphon stipulatus</i> , <i>Amperea vicioides</i> , <i>Acacia obtusifolia</i> , <i>Barbarea serotina</i> , <i>Eperon</i>	Low eucalypt forest with dense sclerophyll shrubs and open groundcover of sedges.	Periodically damp, elevated sandstone plateaus 550-1000m, Budderoo & Morton plateaus.	10	
Heathlands	HL e53 Southern Montane Heath	Shrub: <i>Allocasuarina ramosa</i> , <i>Brachyotum diphyoides</i> , <i>Halea dictylobata</i> , <i>Mitrasacme scoparium</i> Groundcover: <i>Austrostrophia pulchella</i> , <i>Gonocarpus tetragynus</i> , <i>Juncus pallidus</i> , <i>Lepidosiphon stipulatus</i> , <i>Lomandra filiformis</i> , <i>Stylium graminifolium</i>	Closed shrub canopy with sparse emergent acacias and a groundcover of scattered tussocks of grasses and graminoids.	Exposed slopes and ridges 600m to 800m ASL, on skeletal soils above metasedimentary, acid volcanic or granitic substrates. Disjunct patches along the escarpment ranges from Caringbah south to Bombala area.	1800
Freshwater Wetlands	FWW p51 Tableland Lacustrine Herbfield	Grindocarpus: <i>Wilsonia rostrifolia</i> , <i>Agrostis avenacea</i> , <i>Austrodorotheca dubitoria</i> , <i>A. pilosa</i> , <i>Mynophyllum crispatum</i> , <i>Ranunculus dimidiatus</i> , <i>Schoenus niteus</i> , <i>Selliera radicans</i> , <i>Spergularia maritima</i>	Low open ephemeral herbfield.	Periodically inundated bed of Lake Bathurst, c. 670m elevation, southern tableland.	2100
FWW p56 Shoalhaven Riparian Scrub	Shrub: <i>Lepidosiphon stipulatus</i> , <i>Melaleuca uncinata</i> , <i>Callistemon salteri</i> , <i>Lepidosiphon grandifolium</i> , <i>Halea microcarpa</i> , <i>Acacia dealbata</i> , <i>Grindocarpus: Carex guichenotiana</i> , <i>Scirpus polytachus</i> , <i>Carex heterocarpa</i> , <i>Chenopodium pumilio</i> , <i>Dichelone inaequalis</i> , <i>Hydrocotyle pedunculata</i> , <i>Juncus ustulatus</i> , <i>Lomandra longifolia</i> , <i>Microseris stipoides</i> , <i>Parsonsia linearis</i> , <i>Phragmites lanceolata</i> , <i>Senecio diascioides</i>	Open but clumped shrub canopy with patchy groundcover of sedges & forbs.	Alluvial sediments 500-800m elevation along the bed and banks of upper Shoalhaven River.	820	
FWW p57 Tableland Swamp Meadow	Shrub: <i>Lepidosiphon juniperinum</i> , <i>L. obovatum</i> , <i>Lythrum salicaria</i> , <i>Grindocarpus: Baumea gaudichaudii</i> , <i>Hydrocotyle pedunculata</i> , <i>Isachne globosa</i> , <i>Juncus ustulatus</i> , <i>Lepidosiphon stipulatus</i> , <i>Phragmites australis</i> , <i>Ranunculus mundulus</i>	Dense groundcover of water-tolerant, soft-leaved sedges and forbs, occasionally with scattered trees and open to dense shrub layer.	Peats and humic loams in sediment-filled valleys along the Blue Mountains to Braidwood, 300-1100m.	460	
Forested Wetlands	FWF p32 Riverbank Forest	Trees: <i>Casuarina cunninghamiana</i> , <i>Shrub: Hymenanthus dentatus</i> , <i>Unica uncinata</i> , <i>Climbers: Stephania japonica</i> , <i>Pandorea pandanorum</i> , <i>Grindocarpus: Microseris stipoides</i> , <i>Lomandra longifolia</i> , <i>Opilimenus aemulus</i> , <i>Dichondra repens</i>	Forest with an open shrub layer and a dense or patchy groundcover of grasses & ferns	Sandrigged alluvium along south-facing streams, 20-600m, Cox, Abernethy, Watandilly, Shoalhaven & Deua river systems.	30
GW p220 Tableland Swamp Flats Forest	Trees: <i>Eucalyptus viminalis</i> , <i>E. pauciflora</i> , <i>Shrub: Rubus parviflorus</i> , <i>Grindocarpus: Microseris stipoides</i> , <i>Dichondra ssp.</i> , <i>Acacia rosea-zelandica</i> , <i>Hydrocotyle laetifolia</i> , <i>Stellaria purpurea</i> , <i>Psidium esculentum</i> , <i>Erigeron ovatus</i> , <i>Geranium solanderi</i> , <i>Desmodium varians</i>	Low quartz forest with sparse shrubs & dense grassy groundcover.	Poorly drained flats in headwaters of streams 550-1200m, Jindon-Deua.	2600	
Non-Native/Vegetated Areas	NV Modified or bare areas largely without native vegetation, forests, shrublands, grasslands and herbfields comprised primarily of exotic plant species, including exotic plantations and pastures. May include variable component of native species depending on seasonal conditions and regrowth rates.				



This map forms part of the Native Vegetation Mapping Report Series 4, NSW Native Vegetation Mapping Program.
 Map compiled by staff of the Scientific Services Division, NSW Department of Environment, Climate Change & Water.
 * Drainage data supplied by NSW Department of Lands, Panorama Ave Bathurst NSW 2795.
 * Geological data supplied by the Department of Mineral Resources, PO Box 536 St Leonards NSW 1590.
 The information contained in and by this map has been compiled from several sources and may contain errors and omissions. No warranty or representation, expressed or implied, is made with respect to the accuracy of this information, or its suitability for any purpose. The NSW Department of Environment, Climate Change & Water disclaims all and any liability to any person in respect of anything done or omitted to be done in reliance, whether wholly or in part, upon this information.
 This map is only reliable at the published scale of 1:100 000.
 Copyright New South Wales Government. All Rights Reserved.
 No part of this map may be reproduced without permission.
 NSW GOVERNMENT
 Environment, Climate Change & Water